

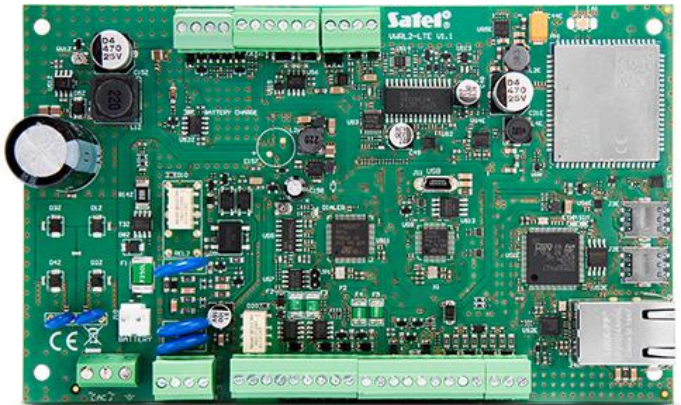
VERSA Plus LTE

CONTROL PANEL

The **VERSA Plus LTE** control panel is designed for protection of small and medium-sized premises. It allows you to create a wired or wireless system – it is compatible with **ABAX 2 (ACU-220, ACU-280)** and **ABAX (ACU-120, ACU-270)** as well as **MICRA (VERSA-MCU)** wireless systems controllers.

The **VERSA Plus LTE** is the solution that combines features of several separate devices. Its motherboard integrates the following modules: Ethernet, cellular GSM/LTE*, PSTN dialer, voice and acoustic alarm verification. As a result, the **VERSA Plus LTE** control panel enables communication via three channels (Ethernet, cellular network*, PSTN), thus ensuring effective transfer of information.

- EN50131 Grade 2 compliance
- 4 programmable wired zones:
 - support for NO and NC type detectors, and roller shutter and shock detectors
 - support for EOL and 2EOL configuration
- additional tamper input, NC type
- 5 programmable wired outputs:
 - 2 high-current outputs
 - 2 low-current outputs, OC type
 - 1 relay output
- 3 power outputs
- output for connecting dedicated enclosure-mounted piezoelectric transducer (acoustic signaling)
- maximum number of programmable zones: 30
- maximum number of programmable outputs: 12
- system subdivision into 2 partitions:
 - each zone can be assigned to two partitions
- system control by means of:
 - keypads:
 - LED with mechanical keyboard – **VERSA LED**
 - LCD with mechanical keyboard – **VERSA-LCD, VERSA-LCDM**
 - wireless LCD with mechanical keyboard – **VERSA-KWRL2**
 - touchscreen – **INT-TSG2, INT-TSH2**
 - partition control module (**INT-CR** – using cards, key fobs and other passive transponders)
 - remote control keyfobs
 - mobile application **VERSA CONTROL**
 - phone (SMS, voice menu)
- integrated modules:
 - Ethernet (reporting to monitoring station, e-mail messaging, mobile application, remote programming)
 - cellular GSM/LTE* (reporting to monitoring station, voice/SMS messaging, SMS/voice menu remote control, mobile application, remote programming)
 - PSTN dialer (reporting to monitoring station, voice messaging, voice menu remote control, remote programming)
 - voice (playback of voice messages for the needs of telephone messaging and voice menu)
 - audio alarm verification (listening in)
- firmware updates available – locally and remotely (UpServ)
- built-in USB MINI-B socket, for programming the control panel and updating its firmware using a computer
- memory of 2047 events
- capability to handle 30 users and assign to each of them:
 - code
 - proximity card or other passive transponder
 - keyfob



4 timers to enable automatic:

- arming/disarming partitions
- control of outputs (turning light ON/OFF, watering garden, etc.)

plug-in terminal blocks

* data transmission in LTE / HSPA + / EDGE / GPRS technology – depending on the capabilities of the mobile network

TECHNICAL DATA

Voice messages	16
Event log	2047
Partitions	2
Timers	4
Enclosure dimensions	266 x 286 x 100 mm
Board dimensions	173 x 105 mm
Operating temperature range	-10...+55°C
Supply voltage (±15%)	18 V AC, 50-60 Hz
Standby mode current consumption	150 mA
Max. current consumption	300 mA
Maximum humidity	93±3%
Battery failure voltage threshold (±10%)	11 V
Battery cut-off voltage (±10%)	10.5 V
Environmental class according to EN50130-5	II
Maximum current consumption from the battery	430 mA
Programmable wired inputs	4
Maximum number of programmable inputs	30
Programmable wired outputs	5
Maximum number of programmable outputs	12
Supplying outputs	3
Communication buses	1
Keypads	up to 6
Security grade according to EN 50131	Grade 2
Recommended transformer	40 VA
Mass (incl. enclosure and accessories)	1250 g
Users	30
Notification e-mail addresses	8
Text messages	64
Current-carrying capacity of KPD output	500 mA / 12 V DC
Output voltage range	10.5 V...14 V DC
Battery charging current	800 mA
Power supply output voltage	12 V DC ±15%
Telephone numbers for notification	8
Power supply output current	2 A
Low current programmable outputs rating	50 mA / 12 V DC
Current-carrying capacity of programmable high-current outputs	1100 mA / 12 V DC
AUX output	500 mA / 12 V DC
Standby current draw from battery	130 mA
+VR output	200 mA / 12 V DC
Programmable relay output	1000 mA / 30 V DC